

Portreath Stream Flood Alleviation Scheme

George Arnison

Funding & Delivery Manager

Simon Jeffery

Senior Advisor

Devon Cornwall & Isles of Scilly FCRM

29 November 2018

Background

- EA project (started in 2016)
 - Fluvial flood risk from Portreath Stream
 - Hydraulic model, initial assessment and investigations...
 - Weak financial case.
 - Autumn 2017 Budget – £40m Defra 'Deprived Community' fund opportunity
 - Speculative Bid - £1.5m awarded July 2018 !
- As a result:
 - Revitalisation and acceleration of project
 - Now one of our top delivery priorities.
 - Currently in optioneering stage.

Funding

Defra 'Deprived Community Fund'

£ 1.500 million

Highways England EDF contrib'n

£ 0.020 million

SWRFCC Local Levy

£ 0.430 million

**Flood Defence Grant in Aid
(FDGiA)**

£ 2.093 million

Key challenges & variables

1. Project Cost = a high level estimate
 - Inevitable early stage cost uncertainty
 - Actual Cost will depend on solution actually selected
2. FDGiA funding = function of scheme benefits
 - Benefits are a function of solution
3. Optioneering is an iterative process
 - What do we do if preferred option cost > funding ?
 - Seek additional funding to meet cost ?
 - Reduce project scope (and cost) to match funds ?

Key constraint

1. Project delivery by 31 March 2021

- Condition of Defra funding – linked to EA's 6 year programme and associated delivery target.
- Only 28 months..... not long.

Programme

- **Optioneering** **Now**
(incl. technical calcs, environmental surveys, costs & benefit analysis, finances, community engagement...)
- **Preferred Option selection** **March'19**
- **Detailed Design, Planning & Consents**
- **Tender**
- **Business Case approval** **April'20**
- **Construction start**
- **Construction complete** **March'21**

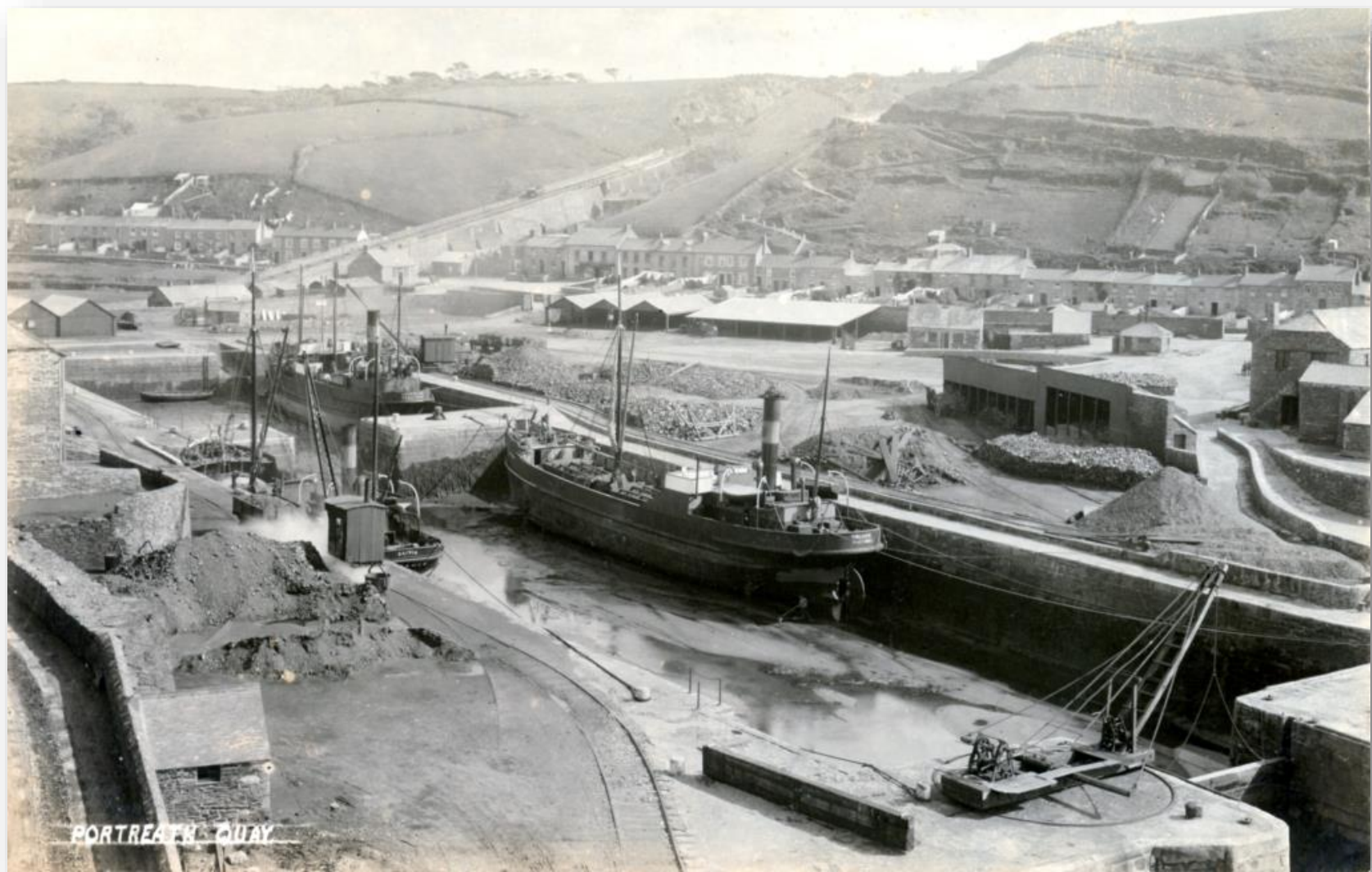


Portreath Stream

Flood Alleviation Scheme

Catchment overview







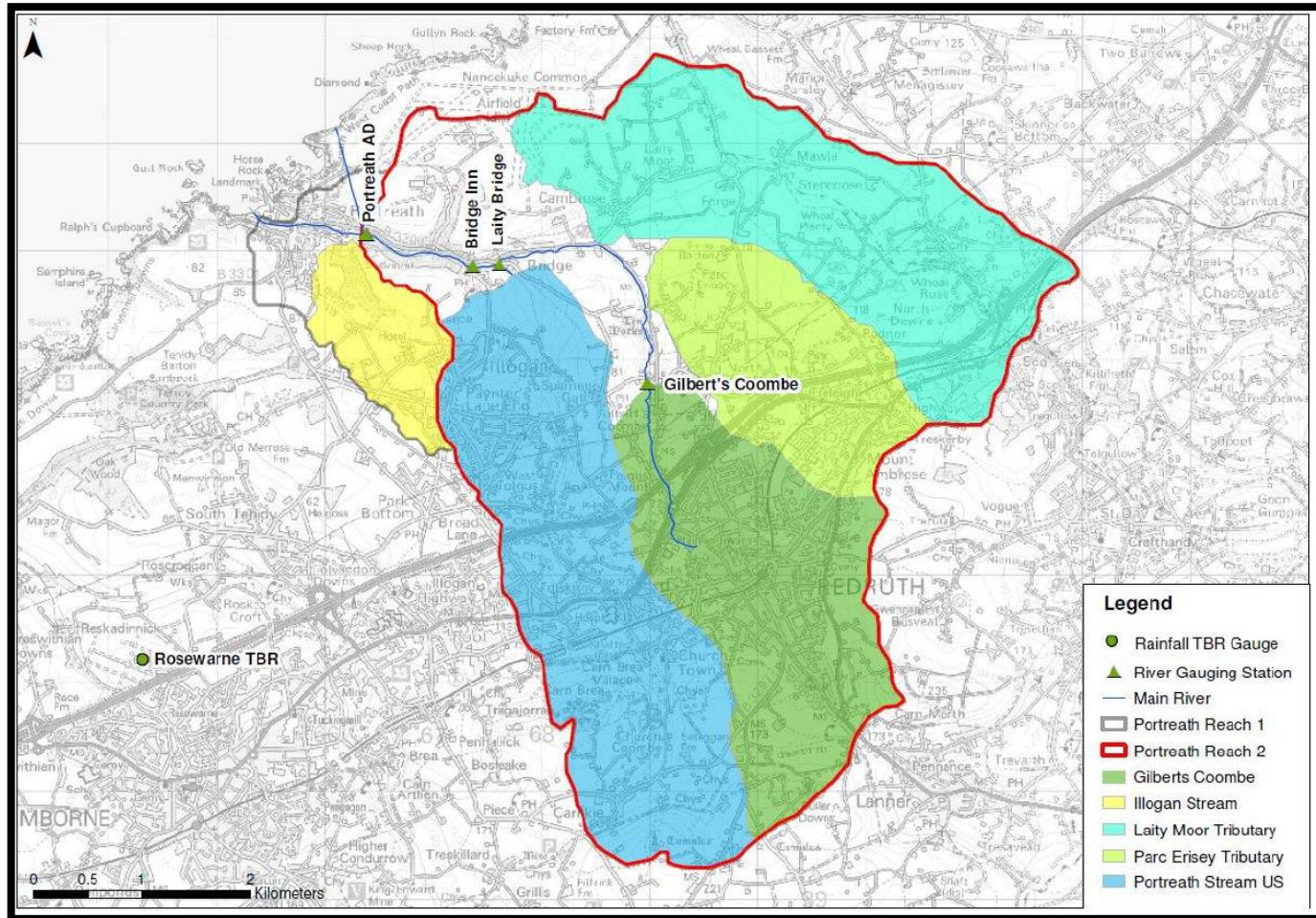
Hidden Valley



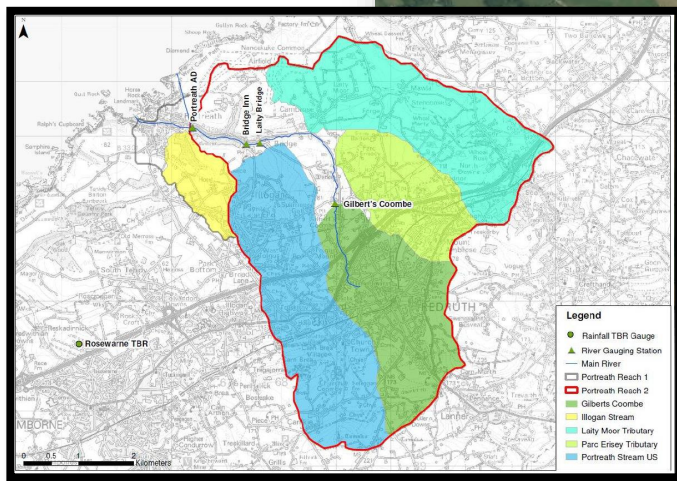
Coastal plateau



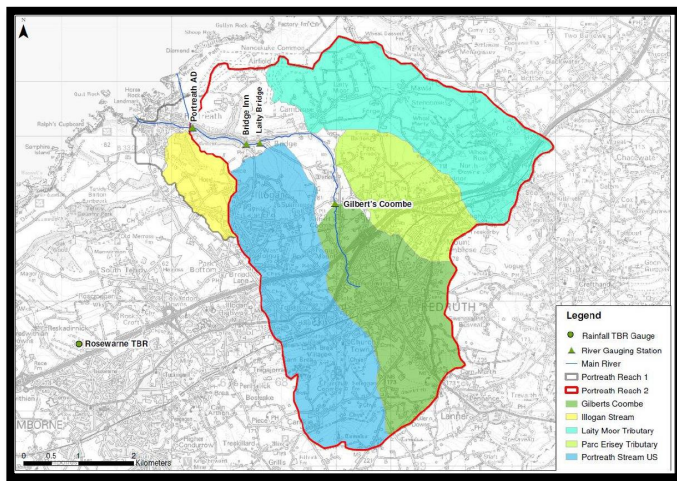
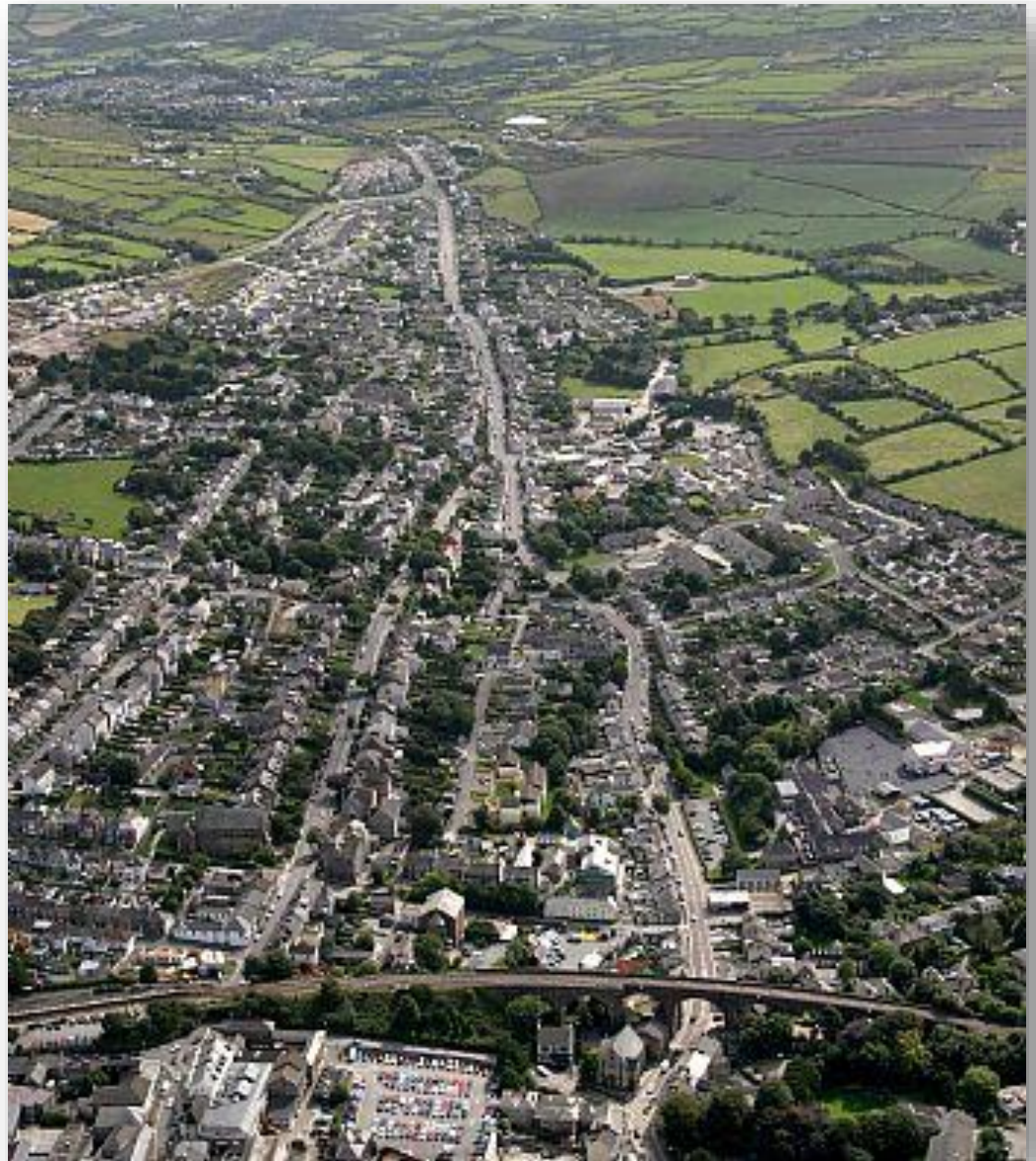
Portreath Catchment – 4 similar tributaries



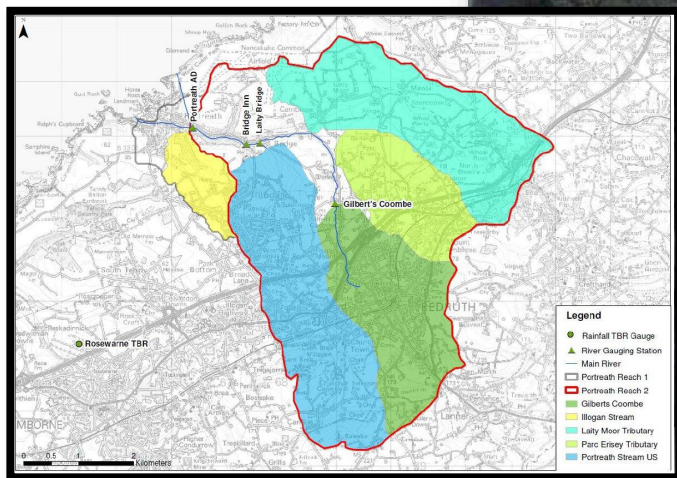
Laity Moor – Cambrose – Natural



Gilberts Coombe Redruth - Urban



Tolgus mine- Tolskithy – Carn Brea Mined & impacted by the A30





Risk perception :
Perched channel



Natural channel

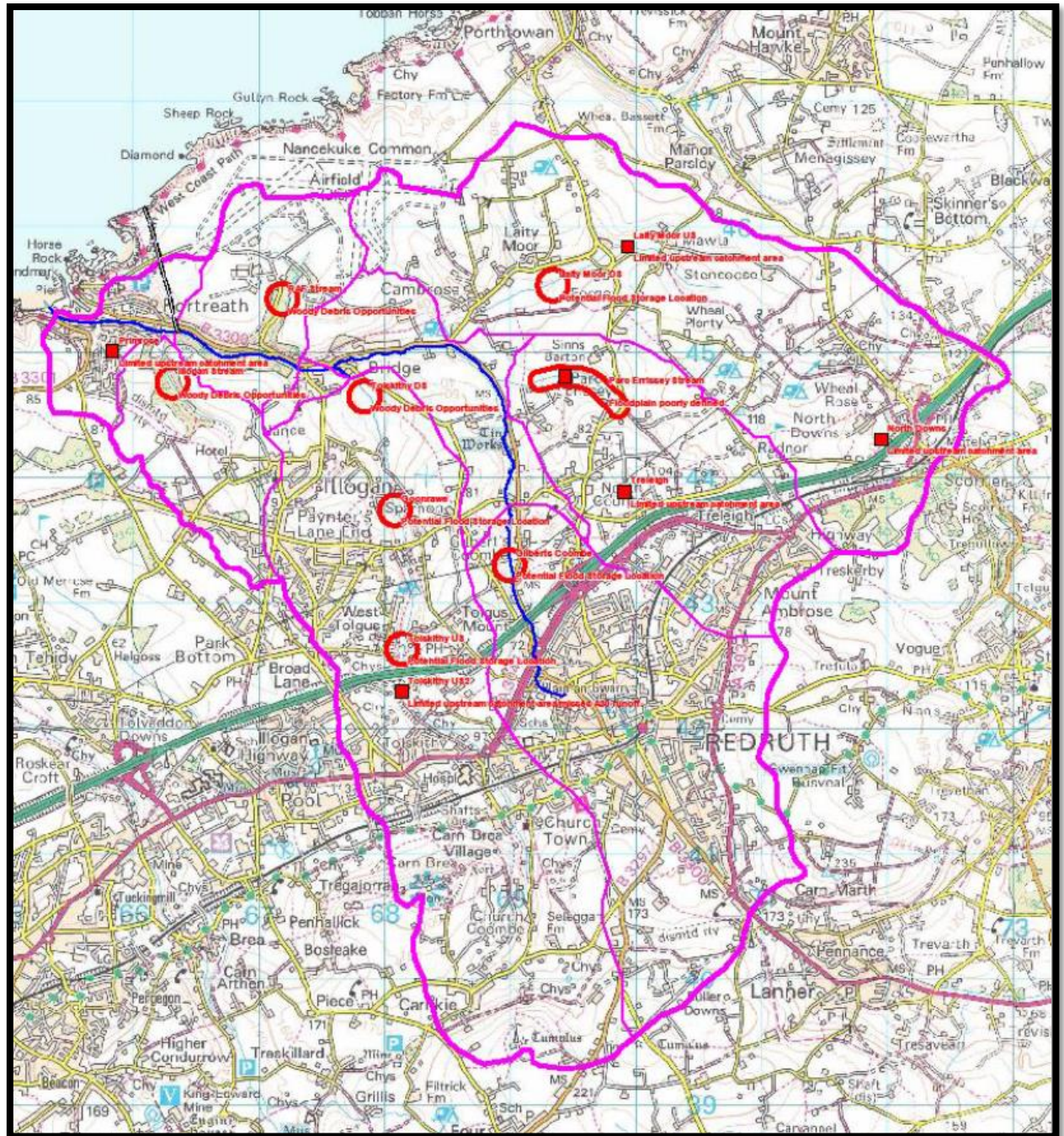
3 Main Options

- Upstream attenuation
 - Improved conveyance through the town
 - Excess flow bypass culvert
- +
- Localised improvements

Attenuation reservoirs



Attenuation locations



Portreath Channel - enlargement



Portreath Channel – overspill culvert outfall to harbour



Localised Improvements

Nancecuke Stream – trash screen and road improvements



Questions

Interested in:

- your views, particular concerns etc ?
- Best way to engage with you & community ?

Harbour wall project - update



- £990k project – FDGiA & LL funded
- New RC wall with stone cladding
- New steps & access ramp repair

Harbour wall project - update

- Press Release 14 Nov
- Site mobilisation 15 Nov.
 - cable diversion completed
 - further trial holes carried out for the new wall foundations (no peat found)
 - existing steps and wall remains removed
 - reinforcing steel on order, due to be delivered to site next week
 - plan to pour at least one base slab and install the stainless steel bars before Christmas
 - 2 week Christmas/New Year site shutdown
- Planned completion March/April 2019
- Temporary defence remaining in place until works complete.